

TO.ME.S. DIESEL

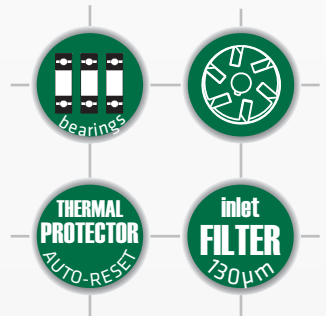
SINCE 1977 Made in Italy ISO 9001:2008



Elettropompe a palette autoadescanti con motore asincrono a corrente alternata. Corpo pompa costruito con materiali di qualità, leggeri, con acciaio all'interno, albero guidato e motore a bassi giri garantiscono prestazioni durature nel tempo. Equipaggiata con l'esclusivo sistema TO.ME.S. di ottimizzazione del trasferimento dei fluidi che aumenta l'efficienza e le prestazioni, diminuendo i decibel.



Self-priming vanes Electric pumps, powered by asynchronous AC motor. High quality light materials Pump body construction, iron inside, shaft guided and at low engine rpm ensure long-lasting performance. Equipped with TO.ME.S. exclusive fluid transfer optimization system which increases efficiency and performance while reduces decibels.

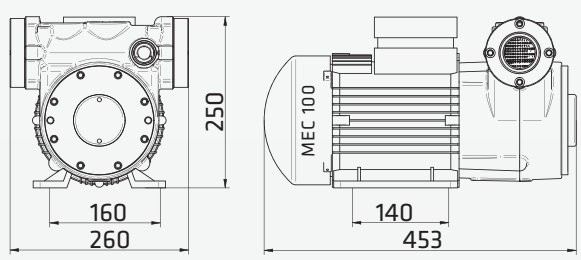


FREE MAX  
**310**  
LT/MIN

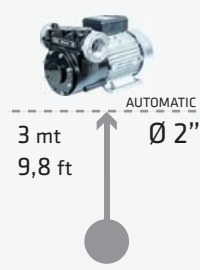
by/  
**PASS**

1 bar PRES  
**304**  
LT/MIN

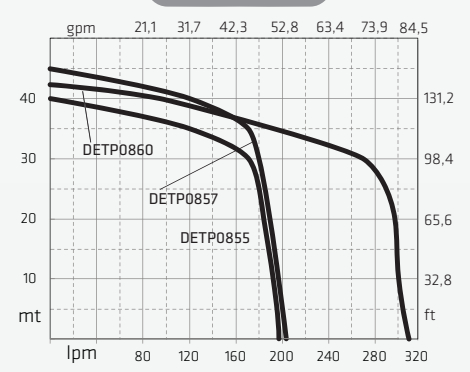
### DIMENSION (mm)



### SUCTION



### PERFORMANCE



name	flow rate		volts	hp	watt	amperè max	RPM	IN	OUT	weight		packing		code
	LPM	CPM (at 10mt = 1 bar)								kg	lbs	cm	inch	
ELEPHANT	191	50,4	230 50Hz	3	2237	6,5	1400	2" F BSP	2" F BSP	38,0	83,8	45 x 27 x 37	17,7x10,6x14,6	DETP0855
	194	51,2	400 50Hz	3	2237	3	1400	2" F BSP	2" F BSP	35,0	77,2	45 x 27 x 37	17,7x10,6x14,6	DETP0857
	304	80,3	400 50Hz	4	2983	4	1400	2" F BSP	2" F BSP	38,0	83,8	45 x 27 x 37	17,7x10,6x14,6	DETP0860